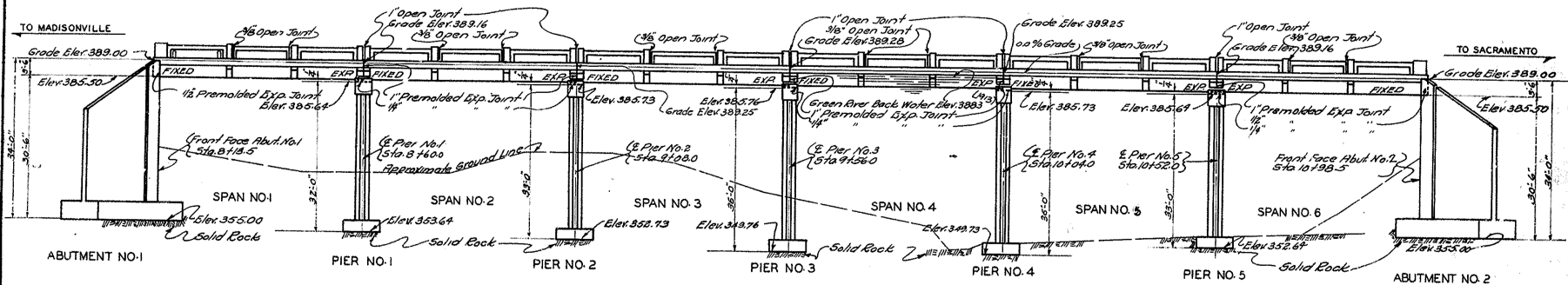
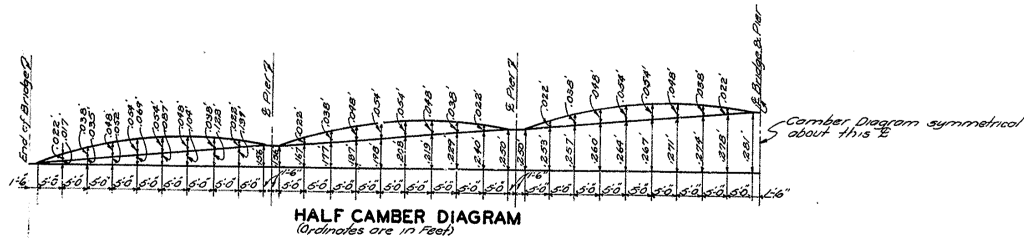


REFERENCES:

For details of 6'-45'-0" R.C. Deck Girders see sheet 2 of 5 of this Drawing.
 For details of C.I. Drains and Expansion Plates see Standard Drawing No. G-200.
 For details of 34'-0" Exp. Abutment No. 1 & 2 see sheet 3 and 4 of 5 of this Drawing.
 For details of R.C. Piers No. 1, 2, 3, 4 and 5 see Standard Drawing No. R-102.
 For details of Handrail see Standard Drawing No. H-15.
 For sketch of Existing Structure see sheet 5 of 5 of this Drawing.

REV.	DATE	BY	CHKD.	APP'D.
7	11-15	WV.		



ELEVATION
6-45'-0" R.C. DECK GIRDER SPANS

GENERAL NOTE

State Highway Department, Kentucky, (1932 Standard with subsequent adopted amendments), Class "A" concrete to be used throughout except in Handrail and Posts class "D" to be used in handrail and Posts. To be deformed bars. Dimensions shown from face of concrete are clear distances. Dimensions shown for bar spacing are the distances center to center of bars. All reinforcement shall be securely held in correct position by means of precast mortar or concrete blocks and wired at all intersections. Precast mortar or concrete blocks supporting reinforcement shall be spaced not further apart than 50 diameters of the supporting bar. 24 Cast Iron Drains required; cost of drains to be included in price bid for Class "A" concrete. 3/4" Monolithic concrete wearing surface to be used and placed in accordance with the 1932 Specifications.

TOTAL ESTIMATE OF QUANTITIES

Concrete Class "A"	1335.6	Cu. Yds.
Concrete Class "D"	31.0	Cu. Yds.
Reinforcement	205,050	Lbs.
48 Expansion Plates (Class "B" Bronze)	2520	Lbs.
Structure Excavation-Unclassified	3270	Cu. Yds.
Existing Structure to be removed	One Each	

G-200
17-102
14-15

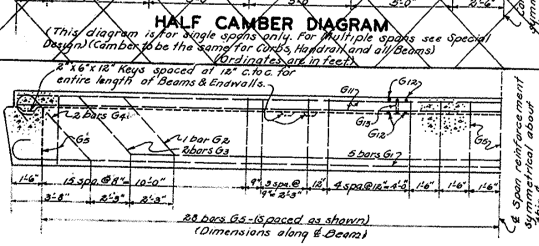
- Specifications:
- Concrete:
- Steel Reinforcement:
- C.I. Drains:
- Wearing Surface:

Sheet 1 of 5
Bridge over Pond River at Dutch Fish Trap

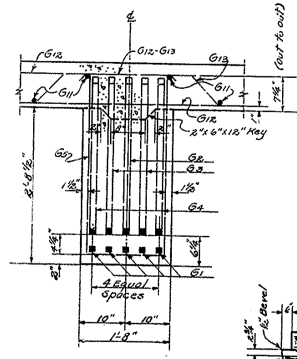
COMMONWEALTH OF KENTUCKY
 STATE HIGHWAY DEPARTMENT
 FRANKFORT
 COUNTY OF
HOPKINS-McLEAN
 MADISONVILLE-SACRAMENTO
 STATION 9+56.0 ROAD PROJECT NO.
 54-120-5 5827

Checked by: J.C.G.H.
 Drawn by: J.C.G.H.
 Date: 11-15

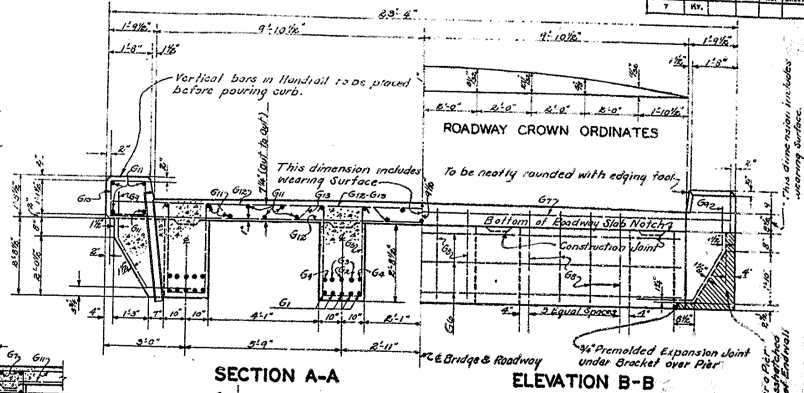
VOID-SEE SHEET 1



HALF SECTION ON \perp BEAM
(Reinforcement same for all Beams.)



TYPICAL BEAM SECTION

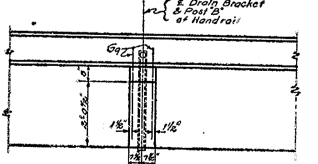


SECTION A-A

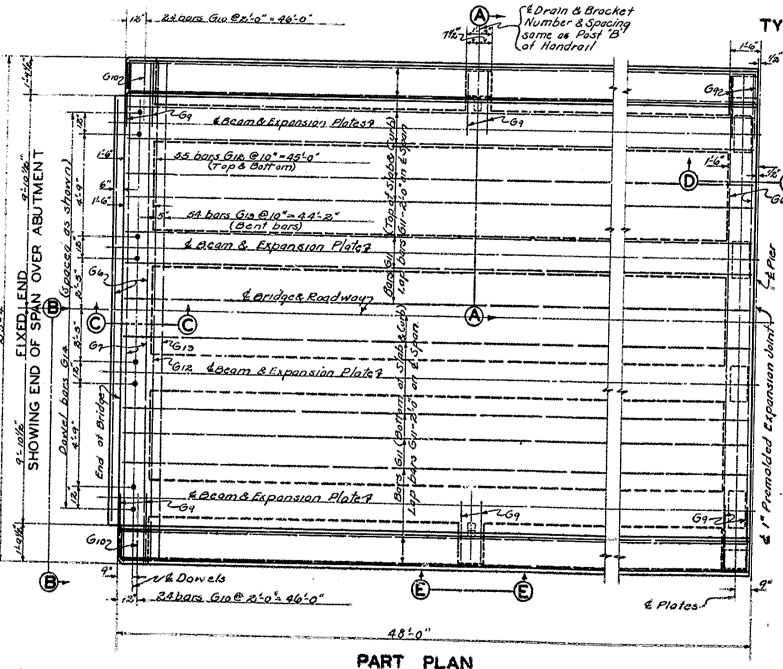
ELEVATION B-B

SECTION C-C

SECTION D-D



SECTION E-E



PART PLAN

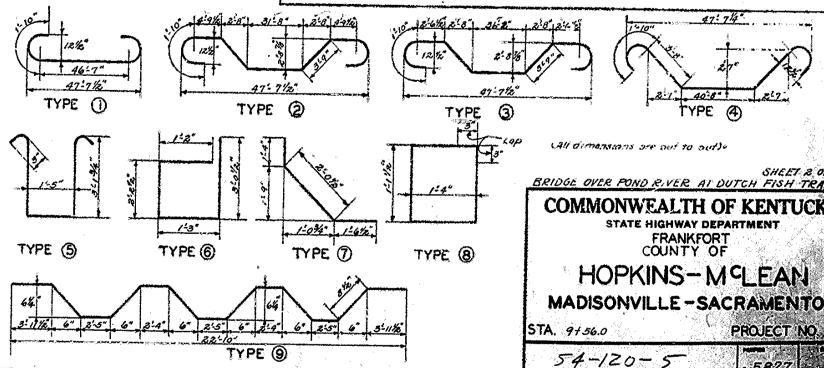
BILL AND TYPES OF REINFORCEMENT FOR ONE SPAN

MARK	TYPE	No.	SIZE	LENGTH	LOCATION
G1	(1)	20	1/2"	50.3	BEAMS
G2	(2)	4	"	52.1	"
G3	(3)	8	"	52.1	"
G4	(4)	8	"	51.6	"
G5	(5)	220	3/4"	8.1	"
G6	STR	12	3/4"	19.5	Endwalks
G7	"	4	3/4"	23.0	"
G8	(6)	22	3/4"	1.2	"
G9	(7)	12	3/4"	2.1	Brooklets & Endwalks
G10	(8)	"	"	"	"
G11	STR	62	"	2.4	" Slab
G12	(9)	110	3/4"	23.1	Top & Bottom of Slab
G13	(10)	34	"	4.1	Slab
G14	STR	8	1/2"	2.0	Dowels, Fixed End

ESTIMATE OF QUANTITIES

SPAN	END	INTERMEDIATE
Concrete, Class 7"	73.8 Cu.Yds.	79.1 Cu.Yds.
Reinforcement	17470 Lbs.	17470 Lbs.

Note: 4 Plates P₁ and 4 Plates P₂ required for Each Span.

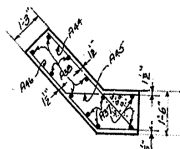
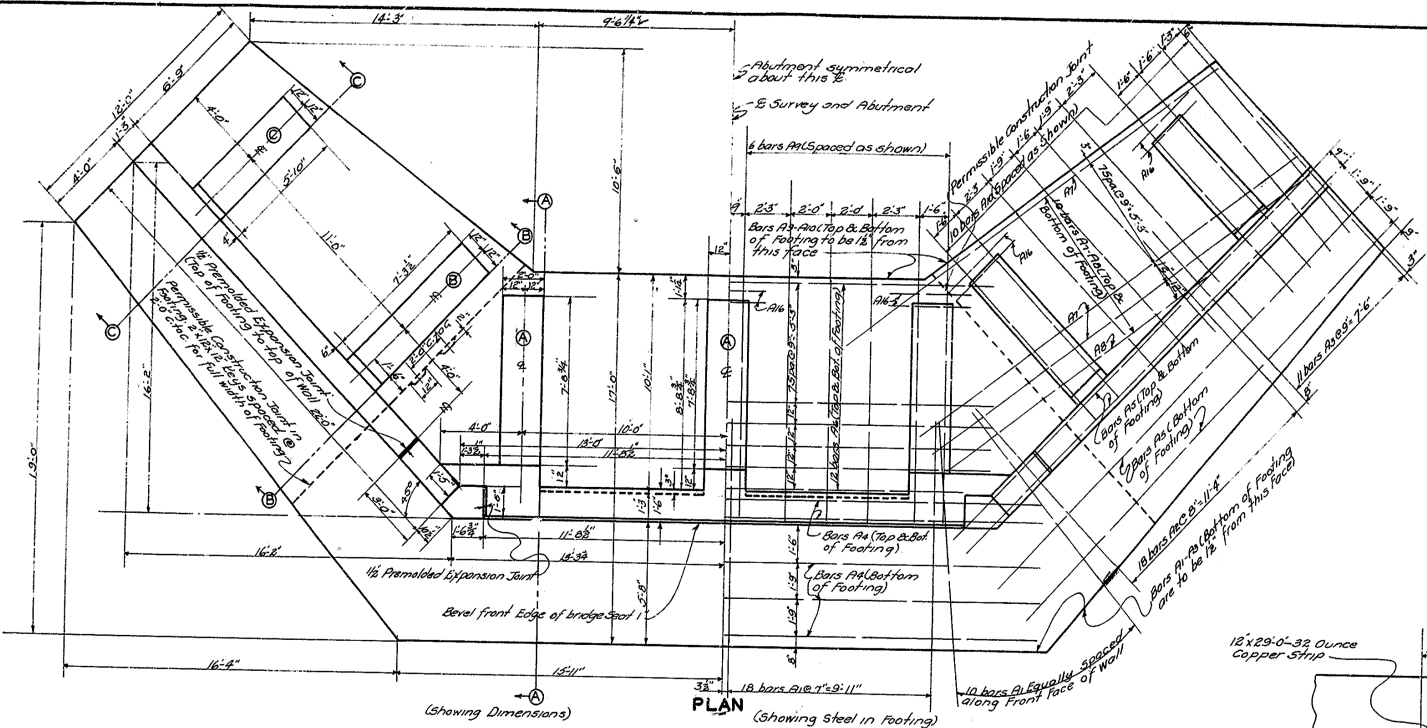


DETAILS OF 45'-0" R.C. DECK GIRDERS

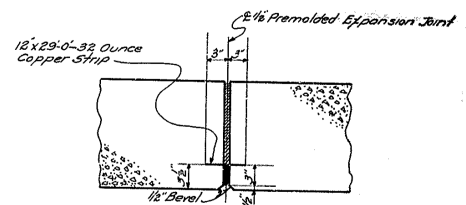
SHEET 2 OF 5
BRIDGE OVER POND RIVER AT DUTCH FISH TRAP
COMMONWEALTH OF KENTUCKY
STATE HIGHWAY DEPARTMENT
FRANKFORT
COUNTY OF
HOPKINS-McLEAN
MADISONVILLE-SACRAMENTO
STA. 91.56.0 PROJECT NO.
54-120-5 5827

BRIDGE

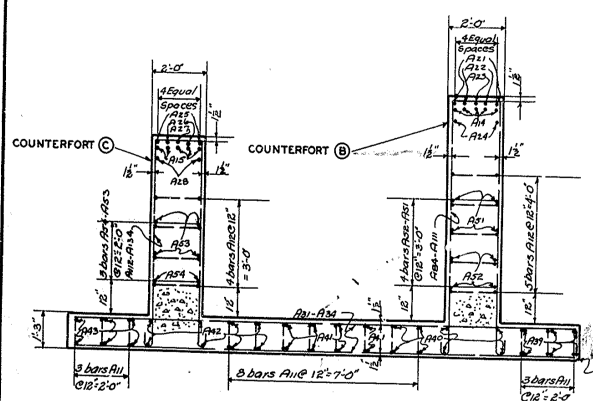
REV.	DATE	BY	DESCRIPTION
1			



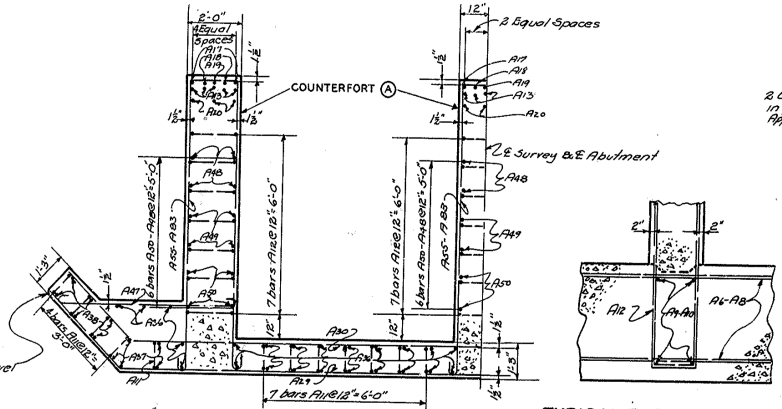
SECTION E-E



PART SECTION D-D
2 Copper Strips Required, To be included in price bid for class of concrete. Approximate Weight of 2 Strips = 116 Lbs.



SECTION D-D
DETAILS OF ABUTMENT NO. 1
DETAILS FOR ABUTMENT NO. 2 SAME AS FOR NO. 1



TYPICAL PART SECTION OF FOOTING AND COUNTERFORT

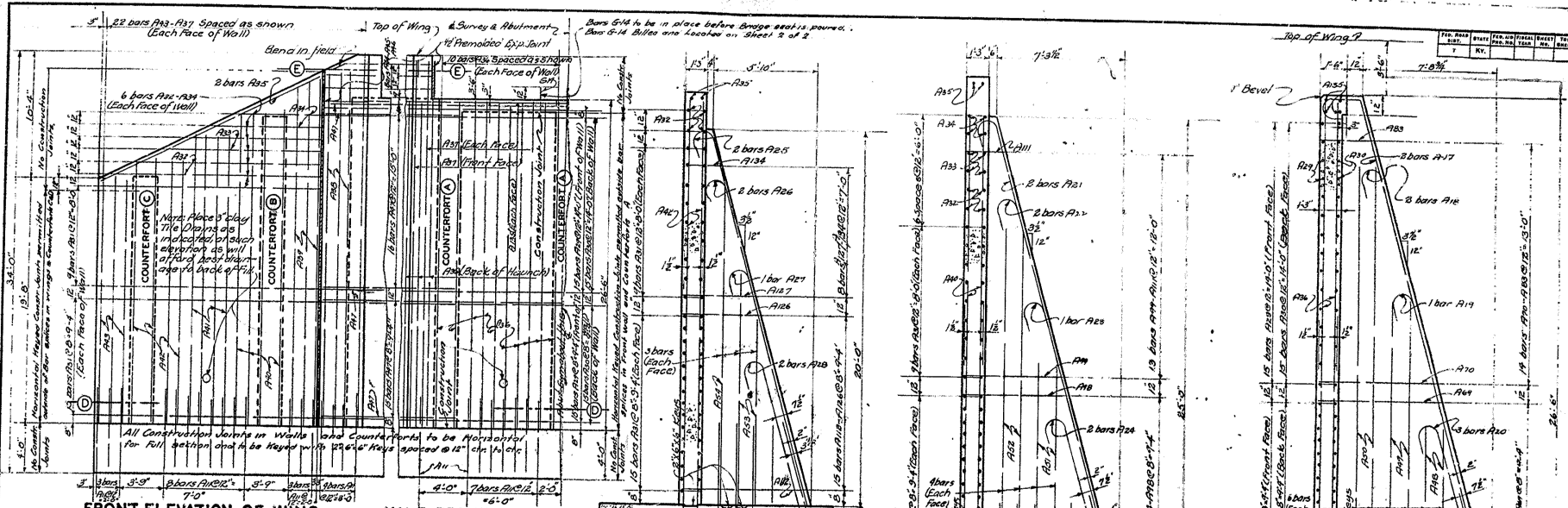
Prepared by: [Name] Date: 10-20-32
 CHECKED BY: [Name] DATE: [Date]
 DESIGNED BY: [Name] DATE: [Date]

Sheet 3 of 5
Bridge over Pond River at Dutch Fish Trap

COMMONWEALTH OF KENTUCKY
STATE HIGHWAY DEPARTMENT
FRANKFORT
COUNTY OF
HOPKINS-McLEAN
MADISONVILLE-SACRAMENTO

STATION 9+56.0	ROAD	PROJECT NO.
		5827

BRIDGE



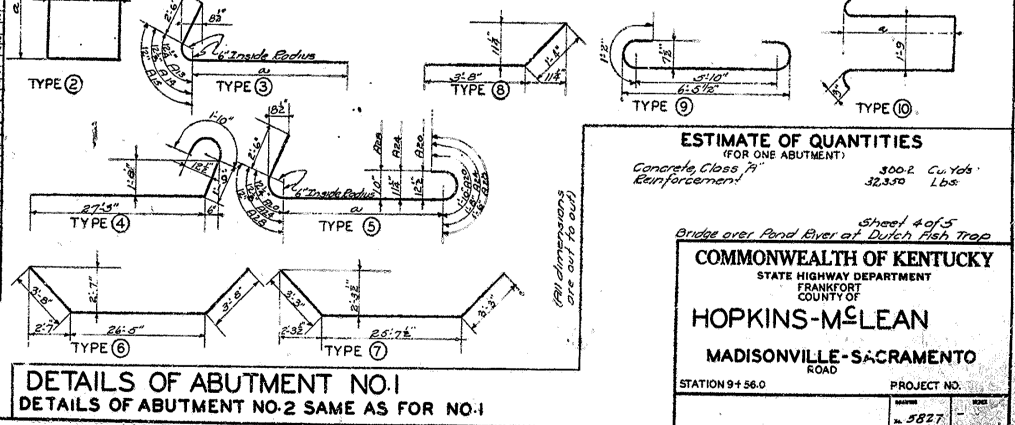
BILL AND TYPES OF REINFORCEMENT (FOR ONE ABUTMENT)

Item No.	Quantity	Location	Bar Size	Notes	Item No.	Quantity	Location	Bar Size	Notes
1	10.0	Bottom of Footing	#4		1	10.0	Counterfort #1	#4	
2	30.0	"	#4		2	30.0	"	#4	
3	12.0	"	#4		3	12.0	"	#4	
4	12.0	"	#4		4	12.0	"	#4	
5	12.0	"	#4		5	12.0	"	#4	
6	12.0	"	#4		6	12.0	"	#4	
7	12.0	"	#4		7	12.0	"	#4	
8	12.0	"	#4		8	12.0	"	#4	
9	12.0	"	#4		9	12.0	"	#4	
10	12.0	"	#4		10	12.0	"	#4	
11	12.0	"	#4		11	12.0	"	#4	
12	12.0	"	#4		12	12.0	"	#4	
13	12.0	"	#4		13	12.0	"	#4	
14	12.0	"	#4		14	12.0	"	#4	
15	12.0	"	#4		15	12.0	"	#4	
16	12.0	"	#4		16	12.0	"	#4	
17	12.0	"	#4		17	12.0	"	#4	
18	12.0	"	#4		18	12.0	"	#4	
19	12.0	"	#4		19	12.0	"	#4	
20	12.0	"	#4		20	12.0	"	#4	
21	12.0	"	#4		21	12.0	"	#4	
22	12.0	"	#4		22	12.0	"	#4	
23	12.0	"	#4		23	12.0	"	#4	
24	12.0	"	#4		24	12.0	"	#4	
25	12.0	"	#4		25	12.0	"	#4	
26	12.0	"	#4		26	12.0	"	#4	
27	12.0	"	#4		27	12.0	"	#4	
28	12.0	"	#4		28	12.0	"	#4	
29	12.0	"	#4		29	12.0	"	#4	
30	12.0	"	#4		30	12.0	"	#4	
31	12.0	"	#4		31	12.0	"	#4	
32	12.0	"	#4		32	12.0	"	#4	
33	12.0	"	#4		33	12.0	"	#4	
34	12.0	"	#4		34	12.0	"	#4	
35	12.0	"	#4		35	12.0	"	#4	
36	12.0	"	#4		36	12.0	"	#4	
37	12.0	"	#4		37	12.0	"	#4	
38	12.0	"	#4		38	12.0	"	#4	
39	12.0	"	#4		39	12.0	"	#4	
40	12.0	"	#4		40	12.0	"	#4	
41	12.0	"	#4		41	12.0	"	#4	
42	12.0	"	#4		42	12.0	"	#4	
43	12.0	"	#4		43	12.0	"	#4	
44	12.0	"	#4		44	12.0	"	#4	
45	12.0	"	#4		45	12.0	"	#4	
46	12.0	"	#4		46	12.0	"	#4	
47	12.0	"	#4		47	12.0	"	#4	
48	12.0	"	#4		48	12.0	"	#4	
49	12.0	"	#4		49	12.0	"	#4	
50	12.0	"	#4		50	12.0	"	#4	
51	12.0	"	#4		51	12.0	"	#4	
52	12.0	"	#4		52	12.0	"	#4	
53	12.0	"	#4		53	12.0	"	#4	
54	12.0	"	#4		54	12.0	"	#4	
55	12.0	"	#4		55	12.0	"	#4	
56	12.0	"	#4		56	12.0	"	#4	
57	12.0	"	#4		57	12.0	"	#4	
58	12.0	"	#4		58	12.0	"	#4	
59	12.0	"	#4		59	12.0	"	#4	
60	12.0	"	#4		60	12.0	"	#4	
61	12.0	"	#4		61	12.0	"	#4	
62	12.0	"	#4		62	12.0	"	#4	
63	12.0	"	#4		63	12.0	"	#4	
64	12.0	"	#4		64	12.0	"	#4	
65	12.0	"	#4		65	12.0	"	#4	
66	12.0	"	#4		66	12.0	"	#4	
67	12.0	"	#4		67	12.0	"	#4	
68	12.0	"	#4		68	12.0	"	#4	
69	12.0	"	#4		69	12.0	"	#4	
70	12.0	"	#4		70	12.0	"	#4	
71	12.0	"	#4		71	12.0	"	#4	
72	12.0	"	#4		72	12.0	"	#4	
73	12.0	"	#4		73	12.0	"	#4	
74	12.0	"	#4		74	12.0	"	#4	
75	12.0	"	#4		75	12.0	"	#4	
76	12.0	"	#4		76	12.0	"	#4	
77	12.0	"	#4		77	12.0	"	#4	
78	12.0	"	#4		78	12.0	"	#4	
79	12.0	"	#4		79	12.0	"	#4	
80	12.0	"	#4		80	12.0	"	#4	
81	12.0	"	#4		81	12.0	"	#4	
82	12.0	"	#4		82	12.0	"	#4	
83	12.0	"	#4		83	12.0	"	#4	
84	12.0	"	#4		84	12.0	"	#4	
85	12.0	"	#4		85	12.0	"	#4	
86	12.0	"	#4		86	12.0	"	#4	
87	12.0	"	#4		87	12.0	"	#4	
88	12.0	"	#4		88	12.0	"	#4	
89	12.0	"	#4		89	12.0	"	#4	
90	12.0	"	#4		90	12.0	"	#4	
91	12.0	"	#4		91	12.0	"	#4	
92	12.0	"	#4		92	12.0	"	#4	
93	12.0	"	#4		93	12.0	"	#4	
94	12.0	"	#4		94	12.0	"	#4	
95	12.0	"	#4		95	12.0	"	#4	
96	12.0	"	#4		96	12.0	"	#4	
97	12.0	"	#4		97	12.0	"	#4	
98	12.0	"	#4		98	12.0	"	#4	
99	12.0	"	#4		99	12.0	"	#4	
100	12.0	"	#4		100	12.0	"	#4	

SECTION C-C COUNTERFORT C

SECTION B-B (COUNTERFORT B)

SECTION A-A (COUNTERFORTS A)



ESTIMATE OF QUANTITIES
(FOR ONE ABUTMENT)

Concrete, Class 7"
Reinforcement

300.2 Cu. Yds.
32,350 Lbs.

Sheet 4 of 5
Bridge over Pond River at Dutch Fish Trap

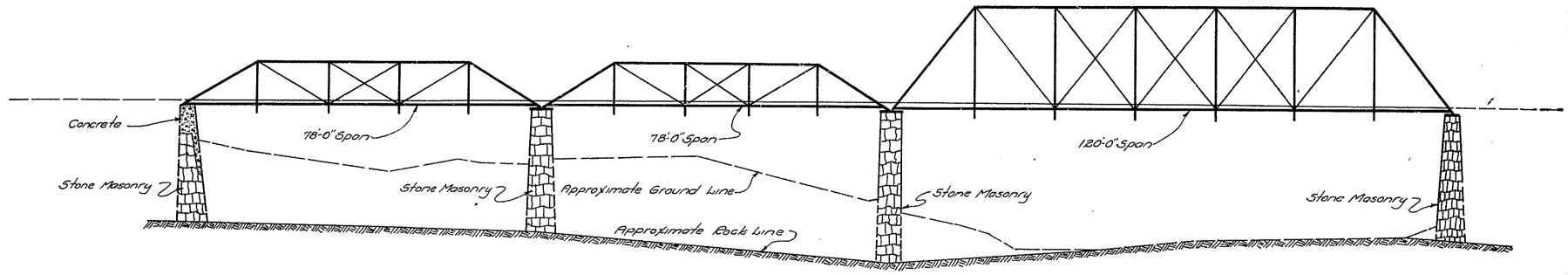
COMMONWEALTH OF KENTUCKY
STATE HIGHWAY DEPARTMENT
FRANKFORT
COUNTY OF

HOPKINS-McLEAN
MADISONVILLE-SACRAMENTO
ROAD

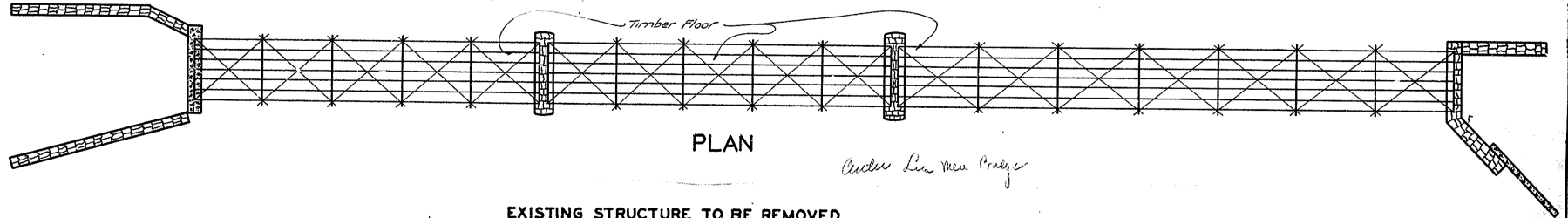
STATION 9+56.0 PROJECT NO. 5827

BRIDGE

FOR NAME	DATE	FOR NAME	DATE	FOR NAME	DATE	FOR NAME	DATE
2	NY.						



ELEVATION



PLAN

EXISTING STRUCTURE TO BE REMOVED

Prepared by: *W. H. ...*
 Checked by: *...*
 Date: *...*

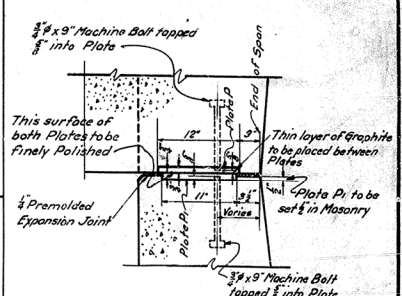
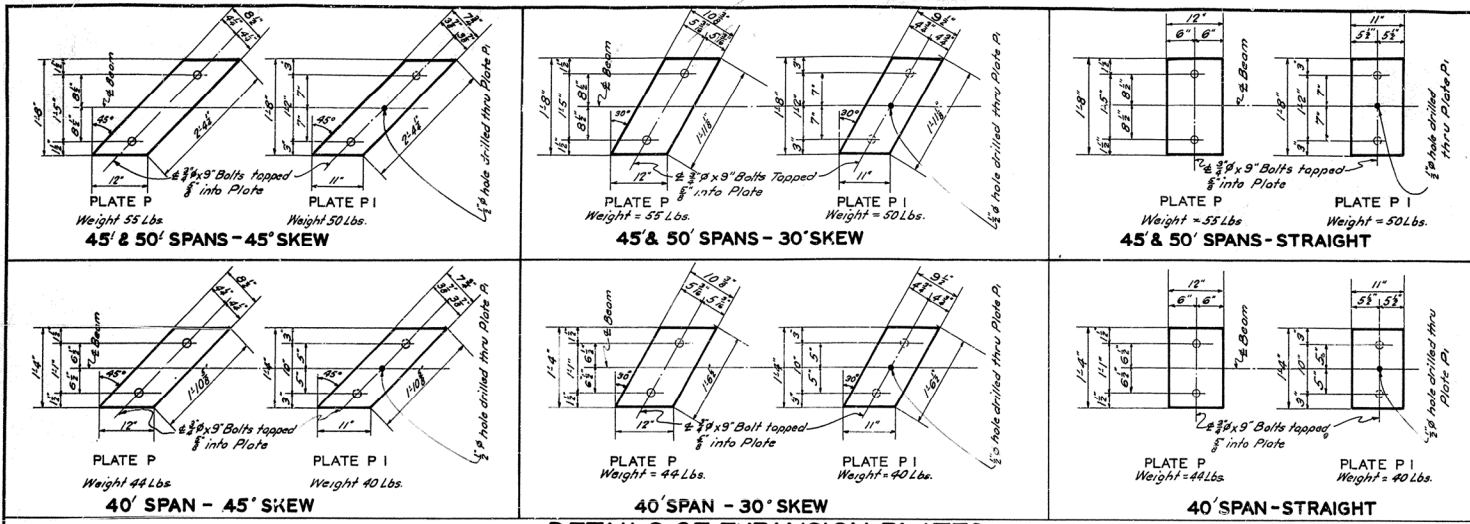
Sheet 5 of 5

Bridge over Pond River at Dutch Fish Trap

COMMONWEALTH OF KENTUCKY
 STATE HIGHWAY DEPARTMENT
 FRANKFORT
 COUNTY OF
HOPKINS-MELEAN
 MADISONVILLE-SACRAMENTO

STATION 9+56.0 ROAD PROJECT NO.
 -5827

FIG. NO.	DATE	REV.	BY	APP'D.	SCALE	PROJECT	NO.
7	KY.						

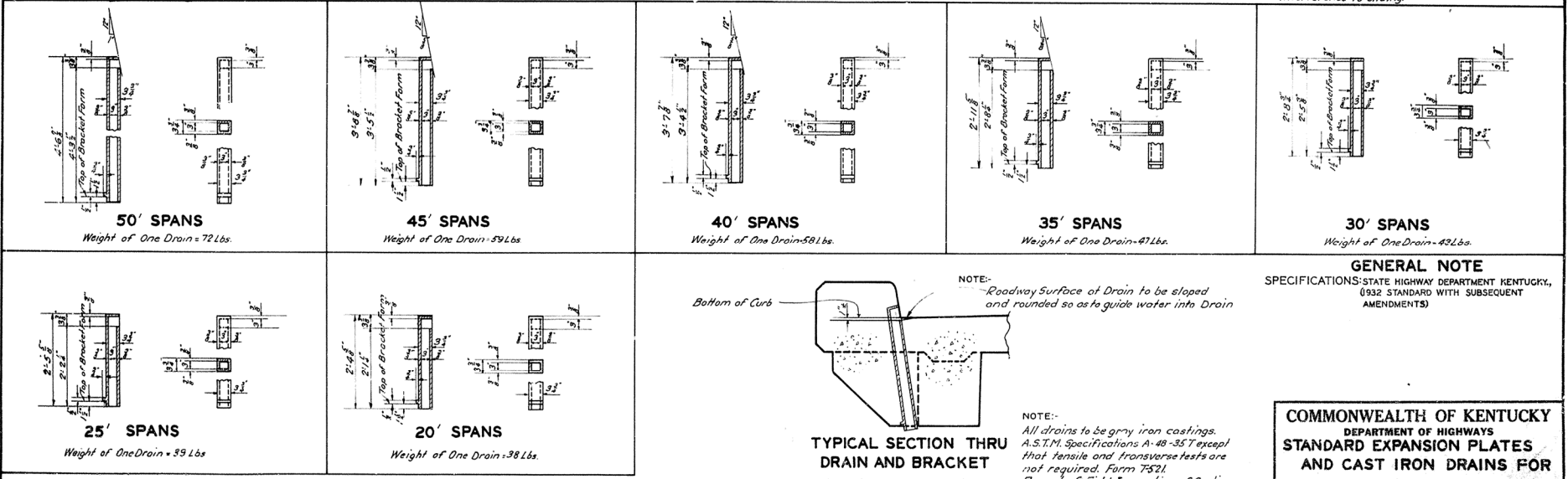


TYPICAL SECTION THRU PLATES
C.N.C. OF BEAM

NOTE
 All Plates to be Class B Bronze A.S.T.M Specifications B22-21 with sliding surface finely polished.
 2 3/8" Machine Bolts to be furnished for each Plate. Weight of Bolts not included in weight of Plates. Cost of Bolts to be included in price bid for Plates.
 Plates shall be true to dimensions and sliding surfaces shall be even and flat to give full bearing with no interference to sliding.

DETAILS OF EXPANSION PLATES

(DETAILS SHOWN ARE FOR RIGHT SKEW REVERSE-FOR LEFT SKEW - FOR NUMBER OF PLATES REQUIRED SEE DECK GIRDER DETAILS)



TYPICAL SECTION THRU DRAIN AND BRACKET
 (Showing location of drains)

NOTE: Roadway Surface of Drain to be sloped and rounded so as to guide water into Drain

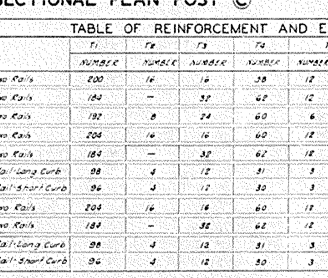
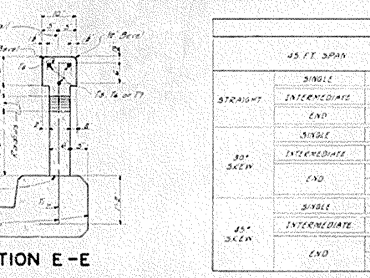
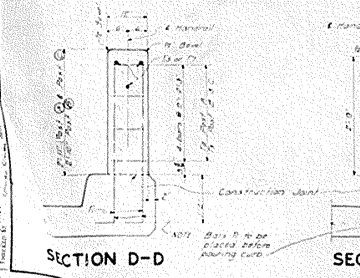
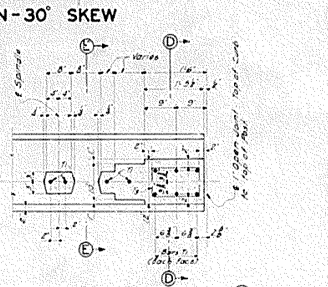
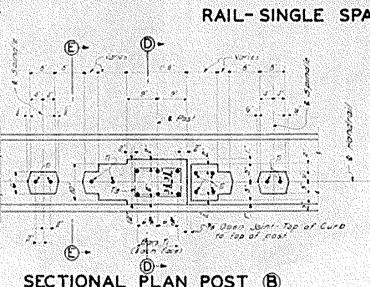
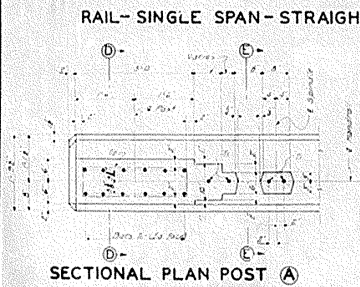
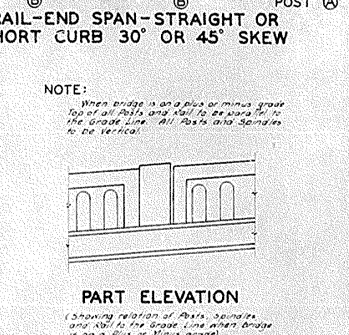
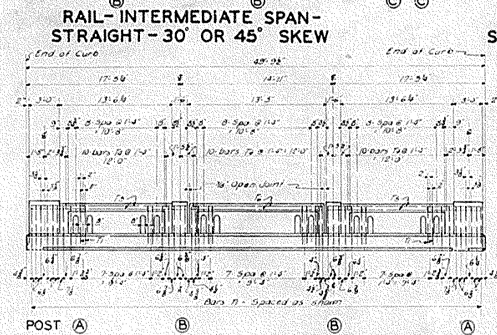
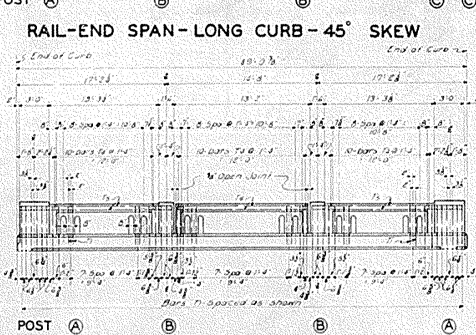
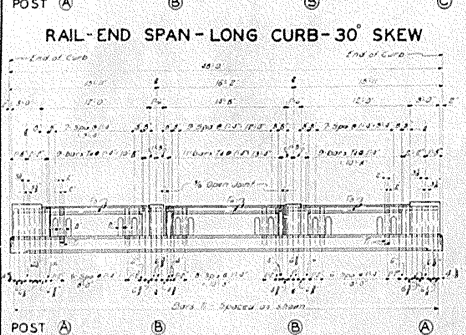
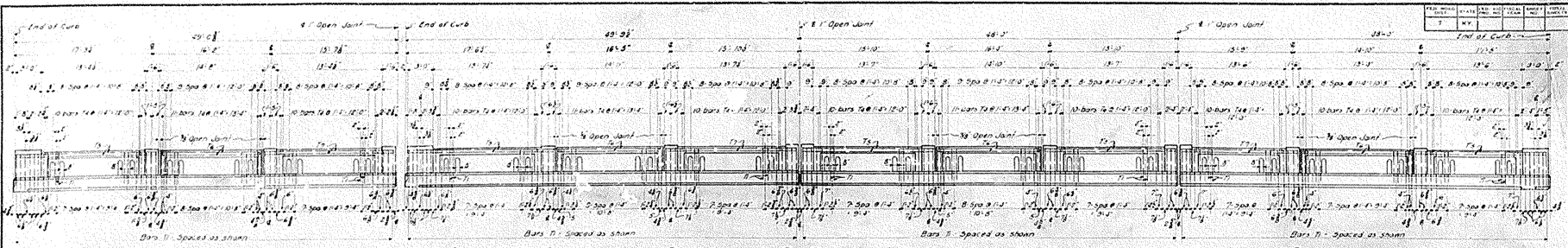
NOTE: All drains to be gray iron castings. A.S.T.M. Specifications A-48-35 T except that tensile and transverse tests are not required. Form T521. Report of Field Inspection of Castings is to be submitted to the Laboratory.

GENERAL NOTE
 SPECIFICATIONS: STATE HIGHWAY DEPARTMENT KENTUCKY, (932 STANDARD WITH SUBSEQUENT AMENDMENTS)

COMMONWEALTH OF KENTUCKY
 DEPARTMENT OF HIGHWAYS
STANDARD EXPANSION PLATES AND CAST IRON DRAINS FOR DECK GIRDES — 24' ROADWAY

DRAWING	NO.	DATE
	G-200	

REVISION BY: DATE: APPROVED BY: DATE: CHECKED BY: DATE:



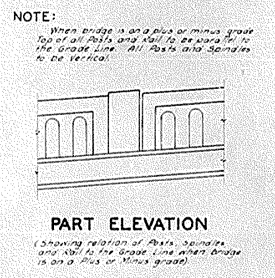
BILL AND TYPES OF REINFORCEMENT

MARK	TYPE	NO.	SIZE	LENGTH	LOCATION	FT	IN
1	1	4	2	17.54	Curb into Post & Spindles	8	8
2	2	8	10	18.5	Post @ 4'	2	8
3	3	8	10	18.5	Post @ 4'	1	8
4	4	8	10	18.5	Top of Rail	-	-
5	5	8	10	18.5	Top of Rail	-	-
6	6	8	10	18.5	Top of Rail	-	-
7	7	8	10	18.5	Top of Rail	-	-

(All dimensions are cut to fit)

TABLE OF REINFORCEMENT AND ESTIMATED QUANTITIES

	SPAN	TYPE	T1		T2		T3		T4		T5		T6		T7		CONCRETE CLASS D' CU Yds	REINFORCEMENT Lbs
			NUMBER	LENGTH	NUMBER	LENGTH	NUMBER	LENGTH	NUMBER	LENGTH	NUMBER	LENGTH	NUMBER	LENGTH				
STRAIGHT	45 FT	SINGLE	Two Rails	200	16	16	38	12	16	2	6	10	3	-	-	-	5.6	1060
		INTERMEDIATE	Two Rails	180	-	32	42	12	16	2	6	10	5	-	-	-	5.3	380
		END	Two Rails	180	8	24	60	6	17	8	6	12	11	6	16	1	5.3	1020
30° SKEW	45 FT	SINGLE	Two Rails	204	16	16	60	12	17	5	6	10	9	-	-	-	5.7	1080
		INTERMEDIATE	Two Rails	184	-	32	62	12	16	2	6	14	9	-	-	-	5.3	380
		END	Rail Long Curb	98	4	12	31	3	17	8	3	10	3	3	16	10	5.5	1030
45° SKEW	45 FT	SINGLE	Two Rails	204	16	16	60	12	17	5	6	10	9	-	-	-	5.8	1080
		INTERMEDIATE	Two Rails	184	-	32	62	12	16	2	6	14	9	-	-	-	5.3	380
		END	Rail Long Curb	98	4	12	31	3	17	8	3	10	6	3	16	1	5.5	1030
		END	Rail Short Curb	92	4	12	30	3	17	8	3	10	11	3	16	1	5.5	1030



GENERAL NOTE

SPECIFICATIONS: State Highway Department, Kentucky, 1935 Standards with subsequent adopted amendments.

CONCRETE: Class D' concrete to be used in handrail and Posts.

STEEL REINFORCEMENT: Dimensions shown from the face of concrete to steel are clear distances. Precast members of concrete bridge supporting or supporting shall be spaced not farther apart than 50 diameters of the supported one.

LEVELS: All corners of handrail to be carried 4' unless otherwise noted herein.

COMMONWEALTH OF KENTUCKY
DEPARTMENT OF HIGHWAYS

STANDARD HANDRAIL
DECK GIRDERS - 45 FT. SPANS

REVISED 11-15

BRIDGE